
Talar Wen

[SN 7012 2660]

Introduction

This small quarry is a valuable source for Llandeilian fossils, in particular trilobites, and is the type locality for the trinucleid *Marrolithoides simplex* (Williams). It was given by Williams (1948, p. 79) as 'quarry 300 yards W of Wernellyn farm, 1 mile SSE [*sic* — should read SSW] of Llangadock'. The section is supplementary to those seen in Dynevor Park, at Ffairfâch and in the Meidrim Road section.

The area in which this quarry lies is included on Williams' (1953) map, and it falls within the outcrop of the Middle Llandeilo Flags. It has featured in excursion guides (e.g. Bassett, 1982), but until recently much of the face was obscured by talus. The section was cleared in a joint operation by the Countryside Council for Wales and Cwmdeithas Edward Lhwyd in early 1997, and its condition is now (1999) far better than it has been for many years.

Description and interpretation

The roadside quarry shows the following section:

Thickness

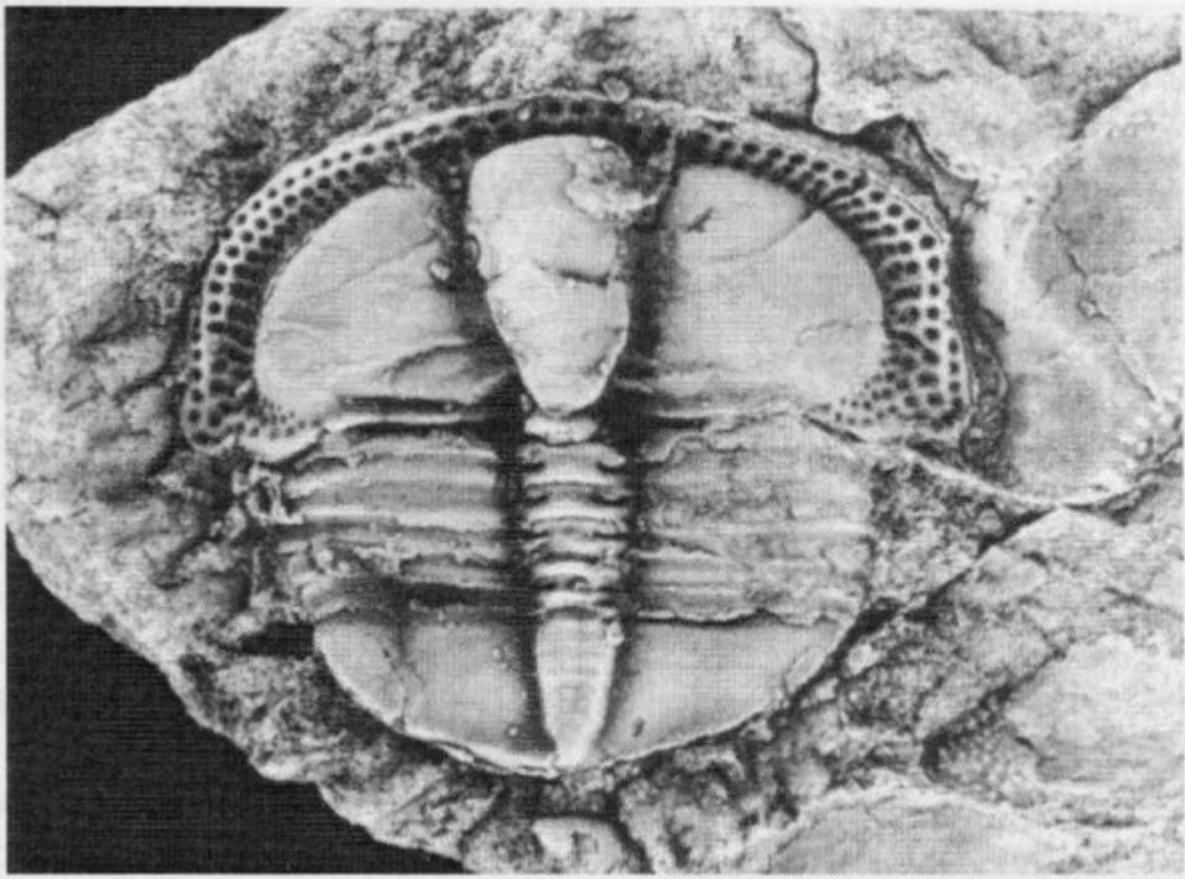
10 m+	Soft shales
6m	Dark, calcareous flags
2m	Massive, calcareous sandstones

Fossils are particularly abundant in the calcareous flags and include articulated and fragmentary specimens of the trilobites *Ogygiocarella debuchii* (Brongniart) and *Marrolithoides simplex* (Williams) (Figure 8.18), together with lingulate brachiopods (*?Palaeoglossa*). This assemblage is typical of the *Marrolithoides simplex* Beds, the lowermost division of the Middle Llandeilo Flags of Williams (1953, p. 193), and are interpreted as having accumulated in relatively shallow-water conditions.

Conclusions

Acting as a complementary section to others at this horizon, Talar Wen is useful in that it is one of the most accessible and fossiliferous localities at which to study the fauna of the Middle Llandeilo Flags and is certainly the best locality to see the *Marrolithoides simplex* Beds. It is the type locality for the eponymous trilobite.

[References](#)



(Figure 8.18) *Marrolithoides simplex* (Williams), x4, from the Middle Llandeilo Flags, Talar Wen, Bethlehem.