
WLGS 46 Torphichen Hills [NS 975 725] (Figure 151)

[WLC site description](#)

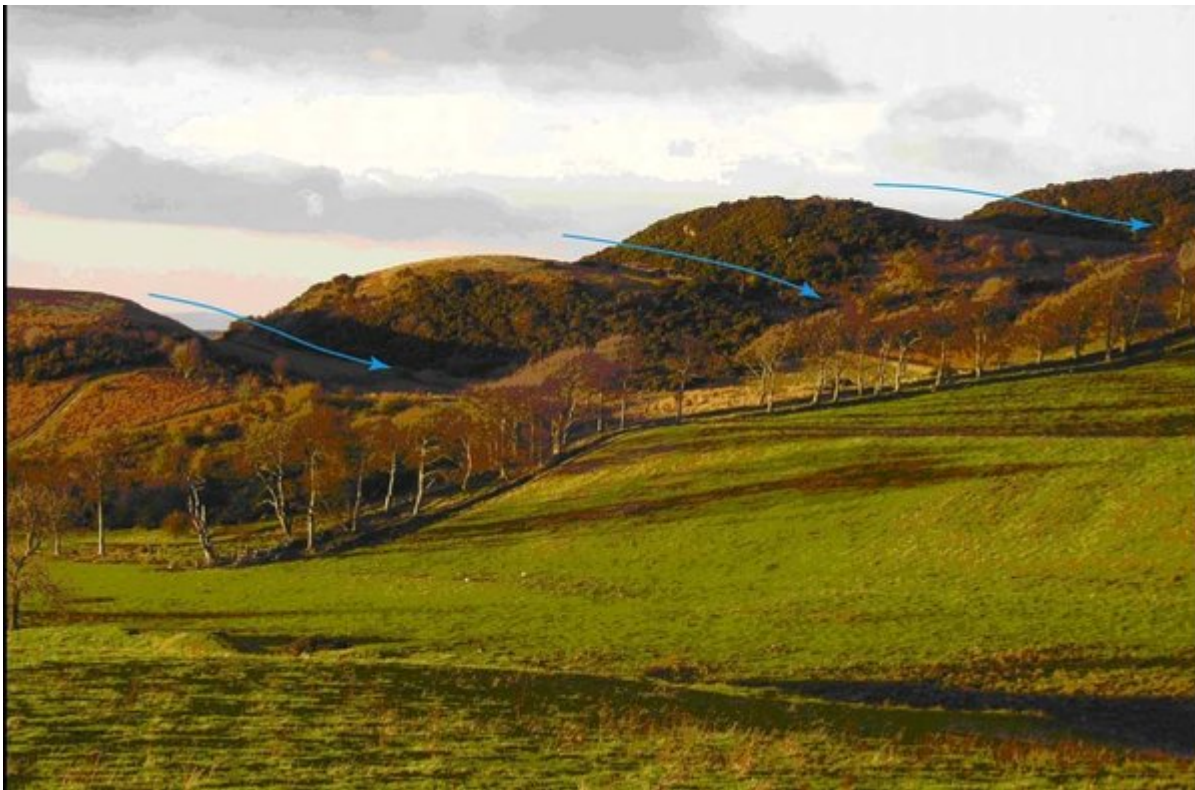
[Part of the Quaternary deposits, landscapes and soils sites](#)

Other designations: AGLV; SAM (Castlehorn Fort and Standing Stones, Torphichen)

Preceptory; AWI (close to Bishopbrae Strips)

Excellent examples of glacial meltwater channels occur on the Torphichen Hill and Gormyre Hills. Glacial meltwater has exploited weaknesses along faults in the quartz-dolerite sill, incising deep channels over the high ground. The remains of a fort on the southernmost hill are a Scheduled Ancient Monument.

(Figure 151) Deep channels cut by glacial meltwater along faults in Torphichen Hill [NS 975 725] (WLGS 46).



(Figure 151) Deep channels cut by glacial meltwater along faults in Torphichen Hill [NS 975 725] (WLGS 46).