

## 4 Site assessments

(Map 1) Geological map of East Dunbartonshire.

(Map 2) Location of sites visited.

**(Table 2) Initial list of potential geodiversity sites compiled from a variety of sources (see 3.1).**

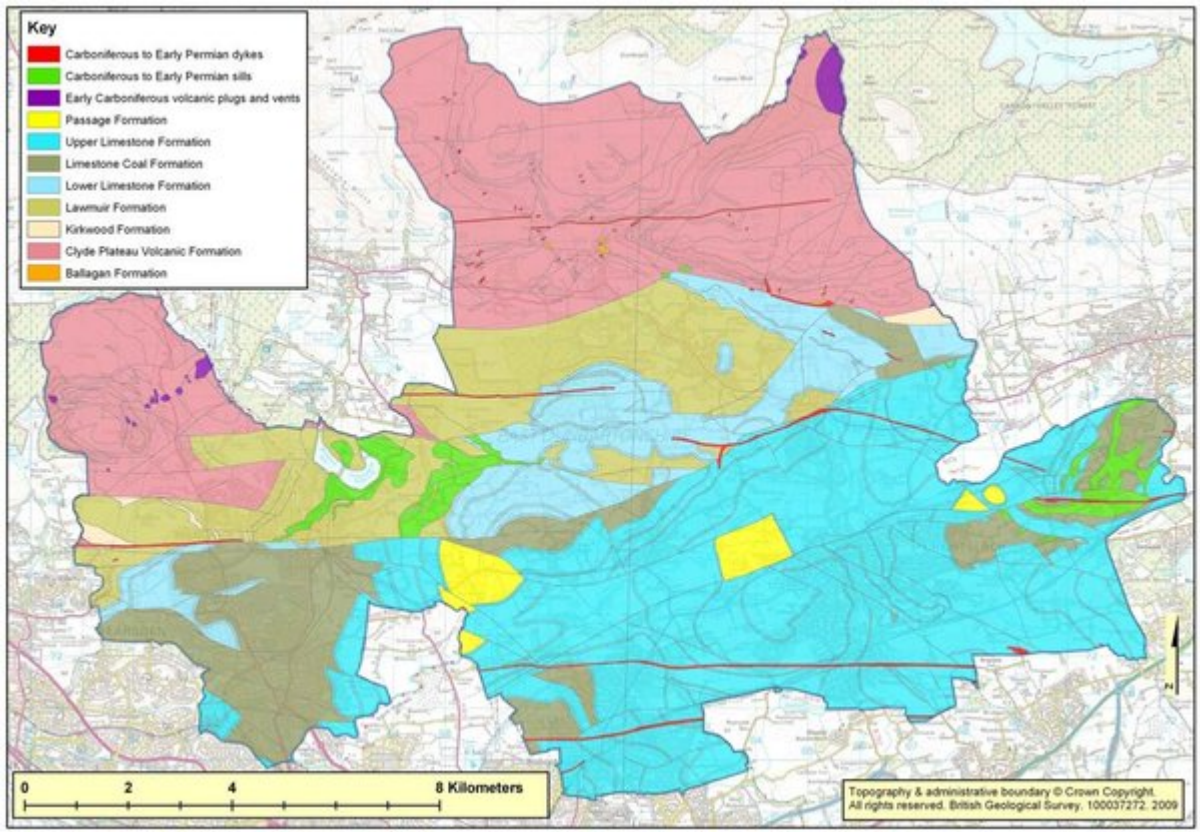
No	Site	100 km square	Easting	Northing	Grid Reference	Source of Information	Priority to visit	Notes	Geodiversity Site No.
1	Finglen	NS	5930	8150	[NS 5930 8150]	BGS map/memoir	P	Might merit further investigation	
2	Craigangawn Quarry area	NS	5250	7695	[NS 5250 7695]	BGS map/memoir	P		EDC 26
3	Mugdock Reservoir (Barrachan)	NS	5600	7600	[NS 5600 7600]	BGS map/memoir	P		EDC 27
4	Mugdock disused quarry	NS	2755	3805	[NS 2755 3805]	BGS map/memoir	P		EDC 11
5	Blairskaith quarries (infilled?) & outcrops	NS	5935	7570	[NS 5935 7570]	BGS map/memoir	P		EDC 13 EDC 25
6	Craigmaddie Muir and Auld Wives Lift	NS	5820	7665	[NS 5820 7665]	BGS map/memoir	P		EDC 14
7	Pattie's Bught disused quarry	NS	2950	3895	[NS 2950 3895]	BGS map/memoir	P		EDC 17
8	Douglas Muir Quarry area	NS	5260	7460	[NS 5260 7460]	BGS map/memoir	P		EDC 23
9	Bearsden Cromarty Crescent area burn	NS	5475	7340	[NS 5475 7340]	BGS map/memoir	P		EDC 9
10	Linn of Baldernock	NS	2875	3740	[NS 2875 3740]	BGS map/memoir	P		EDC 28
11	Smithy hills	NS	2905	3735	[NS 2905 3735]	BGS map/memoir		Not priority site	
12	Lennox Park, Milngavie	NS	2770	3710	[NS 2770 3710]	BGS map/memoir		Not priority site	
13	Bardowie Loch	NS	5800	7350	[NS 5800 7350]	BGS map/memoir	P		EDC 6

14	Buchley (Wilderness) former gravel pits	NS	5965	7245	[NS 5965 7245]	BGS map/memoir	P	EDC 31
15	Clachan of Campsie Waterhead	NS	6125	7995	[NS 6125 7995]	BGS map/memoir	P	EDC 19
16	Farm (council boundary)	NS	6460	8320	[NS 6460 8320]	BGS map/memoir		Not priority site
17	Bin Burn (council boundary)	NS	6565	8275	[NS 6565 8275]	BGS map/memoir	P	Might merit further investigation
18	Lennoxton Forest	NS	6105	7755	[NS 6105 7755]	BGS map/memoir	P	Might merit further investigation
19	Lennoxton Crow Road	NS	6245	7935	[NS 6245 7935]	BGS map/memoir	P	EDC 18
20	Burnel Rannie- Balgrochan burn area	NS	6310	7895	[NS 6310 7895]	BGS map/memoir	P	Might merit further investigation
21	Maiden Castle Motte & Bailey Barraston Farm,	NS	6420	7840	[NS 6420 7840]	BGS map/memoir	P	Might merit further investigation
22	Glenwynd, Glenwhapple area	NS	6055	7582	[NS 6055 7582]	BGS map/memoir	P	EDC 12 EDC 35
23	Finniescroft Wood Burniebrae	NS	3115	3895	[NS 3115 3895]	BGS map/memoir	P	EDC 16
24	Farm, Cowies Glen	NS	6580	7730	[NS 6580 7730]	BGS map/memoir	P	EDC 20
25	Shields and Spouthead farms	NS	6575	7845	[NS 6575 7845]	BGS map/memoir	P	EDC 21
26	Spouthead Burn Hungryside	NS	3265	3940	[NS 3265 3940]	BGS map/memoir	P	EDC 22
27	Bridge, Crofthead gravel pits	NS	3105	3640	[NS 3105 3640]	BGS map/memoir		Not priority site
28	Mid Boghead quarry	NS	3200	3597	[NS 3200 3597]	BGS map/memoir		Not priority site
29	Bothlin Bank, Lenzie	NS	6740	7180	[NS 6740 7180]	BGS map/memoir	P	EDC 4

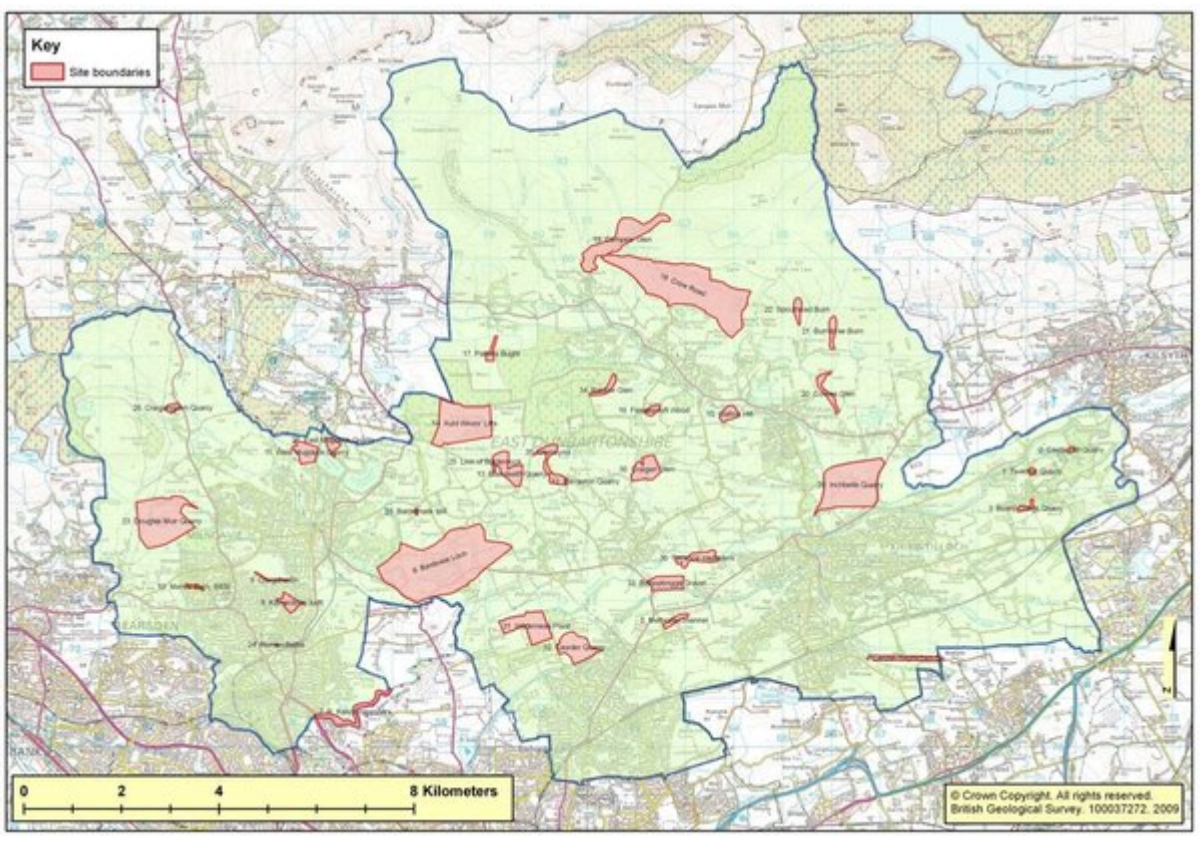
30	Huntershill Sandstone Quarry, Crowhill Road	NS	6065	6955	[NS 6065 6955]	BGS map/memoir		Not priority site
31	Bar Hill Roman Fort area	NS	3545	3805	[NS 3545 3805]	BGS map/memoir	P	EDC 2
32	Twechar Quarry Board	NS	3505	3782	[NS 3505 3782]	BGS map/memoir	P	EDC 1
33	Craigs, Twechar	NS	3500	3745	[NS 3500 3745]	BGS map/memoir		EDC 3
34	Gallow Hill, Glazert Water	NS	3200	3840	[NS 3200 3840]	BGS map/memoir	P	EDC 15
35	Inchbelle landfill, gravel pit	NS	3320	3780	[NS 3320 3780]	BGS map/memoir		EDC 29
36	Bishopbriggs No 2 Gravel Pit	NS	3125	3675	[NS 3125 3675]	BGS map/memoir		EDC 33
37	Cawder Golf Course (gravel pit)	NS	3060	3600	[NS 3060 3600]	BGS map/memoir		EDC 32
38	Low Moss	NS	3150	3635	[NS 3150 3635]	BGS map/memoir	P	EDC 5
39	Lennoxtown	NS	628	796	[NS 628 796]	Strathclyde RIGS		Matched with BGS site
40	Bearsden to Balmore (SW point)	NS	554	706	[NS 554 706]	Strathclyde RIGS	P	EDC 7
41	East end of Lennoxtown	NS	640	770	[NS 640 770]	Strathclyde RIGS		Matched with BGS site
42	Bearsden, Kilmardinny	NS	549	729	[NS 549 729]	Strathclyde RIGS	P	EDC 8
43	St Germain's	NS	544	714	[NS 544 714]	Strathclyde RIGS		Not priority site
44	Lennoxtown	NS	622	795	[NS 622 795]	Strathclyde RIGS		Matched with BGS site
45	Loch Ardinning	NS	564	779	[NS 564 779]	Strathclyde RIGS		Outside EDC
46	Douglas Muir Quarry	NS	515	745	[NS 515 745]	Strathclyde RIGS		Matched with BGS site
47	Auld Wives' Lifts, Craigmaddie Muir	NS	583	764	[NS 583 764]	Strathclyde RIGS		Matched with BGS site

48	Campsie Glen	NS	611	797	[NS 611 797]	Strathclyde RIGS	Matched with BGS site	
49	Linn of Baldernock	NS	591	758	[NS 591 758]	Strathclyde RIGS	Matched with BGS site	
50	Lennoxtown	NS	634	789	[NS 634 789]	Strathclyde RIGS	Not priority site	
51	Lennoxtown	NS	550	800	[NS 550 800]	Strathclyde RIGS	?Outside EDC	
52	Milngavie waterworks	NS	557	762	[NS 557 762]	Strathclyde RIGS	Matched with BGS site	
53	Barr Hill, Tewchar	NS	709	759	[NS 709 759]	Strathclyde RIGS	Matched with BGS site	
54	Blairskaith quarry	NS	595	752	[NS 595 752]	Strathclyde RIGS	Matched with BGS site	
55	Blairskaith quarry	NS	592	758	[NS 592 758]	Strathclyde RIGS	Not priority site	
56	Barraston quarry	NS	604	758	[NS 604 758]	Strathclyde RIGS	Matched with BGS site	
57	Craigen Glen	NS	622	755	[NS 622 755]	Strathclyde RIGS		EDC 30
58	Manse Burn (SSSI)	NS	529	733	[NS 529 733]	SNH	P	EDC 10
59	Bearsden Roman Baths	NS	546	721	[NS 546 721]	HS		EDC 24

## [Bibliography](#)



(Map 1) Geological map of East Dunbartonshire.



(Map 2) Location of sites visited.

Table 2								Table 2 (continued)								Table 2 (continued)								
No.	Site	Easting	Northing	Source of information	Priority for visit	Notes	Geodiversity Site No.	No.	Site	Easting	Northing	Source of information	Priority for visit	Notes	Geodiversity Site No.	No.	Site	Easting	Northing	Source of information	Priority for visit	Notes	Geodiversity Site No.	
1	Frageen	N5 5930	8150	BOG map/memorandum	P	Sight merit further investigation		21	Wester Castle	N5 6430	7940	BOG map/memorandum	P	Sight merit further investigation		41	East end of Linnodan	N5 543	775	Geostyle RGS				Matched with BOG site
2	Crageen quarry area	N5 5250	7650	BOG map/memorandum	P		EDC 28	22	Barnston Farm, Glenaryd, Glenashale area	N5 6065	7342	BOG map/memorandum	P		EDC 12 EDC 36	42	Barnston, Kilmartine	N5 543	729	Geostyle RGS	P			EDC 8
3	Maghlaigha (Barnston)	N5 6050	7900	BOG map/memorandum	P		EDC 37	23	Fintracull Wood	N5 5115	3650	BOG map/memorandum	P		EDC 18	43	St Demaria	N5 544	714	Geostyle RGS				Not priority site
4	Maghlaigha quarry	N5 5755	8655	BOG map/memorandum	P		EDC 11	24	Barnston Farm, Coosa Glen	N5 6560	7730	BOG map/memorandum	P		EDC 20	44	Linnodan	N5 522	769	Geostyle RGS				Matched with BOG site
5	Barnston quarry (Barnston) & outcrop	N5 5935	7575	BOG map/memorandum	P		EDC 25	25	Grange and Spinnhead farms	N5 6575	7845	BOG map/memorandum	P		EDC 21	45	Lark Adenning	N5 584	779	Geostyle RGS				Clutter EDC
6	Crageen Mill and Auld Shes Lk	N5 5620	7650	BOG map/memorandum	P		EDC 14	26	Spinnhead Burn	N5 5265	3640	BOG map/memorandum	P		EDC 22	46	Crageen Mill Quarry	N5 519	745	Geostyle RGS				Matched with BOG site
7	Maghlaigha quarry	N5 5950	3665	BOG map/memorandum	P		EDC 17	27	Maghlaigha Bridge - Crawford gravel pit	N5 5155	3640	BOG map/memorandum		Not priority site		47	Auld Shes Lk, Crageen Mill	N5 583	764	Geostyle RGS				Matched with BOG site
8	Crageen Mill Quarry area	N5 5360	7460	BOG map/memorandum	P		EDC 23	28	Maghlaigha quarry	N5 5250	3665	BOG map/memorandum		Not priority site		48	Campbell Glen	N5 611	787	Geostyle RGS				Matched with BOG site
9	Barnston Quarry	N5 5475	7340	BOG map/memorandum	P		EDC 9	29	Edin Bank, Linnodan	N5 6745	7140	BOG map/memorandum	P		EDC 4	49	Line of Balmacara	N5 591	758	Geostyle RGS				Matched with BOG site
10	Line of Balmacara	N5 2875	3740	BOG map/memorandum	P		EDC 28	30	Huntmill Sandstone Quarry, Coosa Road	N5 6065	6955	BOG map/memorandum		Not priority site		50	Line of Balmacara	N5 591	758	Geostyle RGS				Matched with BOG site
11	Sandstone	N5 2905	3735	BOG map/memorandum		Not priority site		31	Bar Hill Quarry	N5 3543	3505	BOG map/memorandum	P		EDC 2	51	Linnodan	N5 544	769	Geostyle RGS				Not priority site
12	Linnodan Park, Milngavie	N5 2770	3710	BOG map/memorandum		Not priority site		32	Teuchter Quarry	N5 3555	3782	BOG map/memorandum	P		EDC 1	52	Linnodan	N5 540	850	Geostyle RGS				Outside EDC
13	Barnston Loch	N5 5800	7350	BOG map/memorandum	P		EDC 6	33	Teuchter Quarry	N5 3550	3745	BOG map/memorandum	P		EDC 3	53	Milngavie waterworks	N5 647	762	Geostyle RGS				Matched with BOG site
14	Barnston Quarry	N5 5885	7245	BOG map/memorandum	P		EDC 21	34	Teuchter Quarry	N5 3550	3740	BOG map/memorandum	P		EDC 10	54	Bar Hill Teuchter	N5 709	769	Geostyle RGS				Matched with BOG site
15	Crageen Quarry	N5 4129	7989	BOG map/memorandum	P		EDC 19	35	Teuchter Quarry	N5 3550	3780	BOG map/memorandum	P		EDC 28	55	Bar Hill Teuchter	N5 709	769	Geostyle RGS				Matched with BOG site
16	Crageen Quarry	N5 4480	8320	BOG map/memorandum	P			36	Teuchter Quarry	N5 3550	3775	BOG map/memorandum	P		EDC 33	56	Barnston quarry	N5 592	759	Geostyle RGS				Not priority site
17	Bar Burn (quarry boundary)	N5 6665	4375	BOG map/memorandum	P	Sight merit further investigation		37	Teuchter Quarry	N5 3550	3780	BOG map/memorandum	P		EDC 32	57	Crageen Glen	N5 622	758	Geostyle RGS				Matched with BOG site
18	Linnodan Forest	N5 4105	7755	BOG map/memorandum	P	Sight merit further investigation		38	Line Mill	N5 2190	3635	BOG map/memorandum	P		EDC 5	58	Barnston Quarry	N5 599	759	Geostyle RGS				Matched with BOG site
19	Linnodan Glen	N5 4245	7925	BOG map/memorandum	P		EDC 18	39	Linnodan	N5 629	798	Geostyle RGS		Matched with BOG site		59	Crageen Glen	N5 622	758	Geostyle RGS				EDC 30
20	Bar Burn (quarry boundary)	N5 6710	7650	BOG map/memorandum	P	Sight merit further investigation		40	Barnston to Barnston 200	N5 554	758	Geostyle RGS	P		EDC 7	60	Marra Burn (200)	N5 529	718	SPH	P			EDC 15

(Table 2) Initial list of potential geodiversity sites compiled from a variety of sources (see 3.1).