
(Photo 00-1) Front cover. Grange Fell.

(Photo 00-2) Ian Jackson, the author.

(Photo 00-3) Fleetwith Pike.

(Photo 00-4) Fleswick Bay, St. Bees Head.

(Photo 00-5) Saltom Bay and Whitehaven.

(Photo 00-6) Looking southwest across the Vale of Eden from Hartside Pass.

(Photo 00-7) M6 at Tebay looking south. Lunedale.

(Photo 00-8) Looking south down Crummock Water

(Photo 00-9) Rear cover.

(Photo 00-10) 60 sites in 5 themes.

(Photo 00-11) Cumbria's geological journey.

(Photo 01-1) View northwest over the eroded sandstone escarpment of Christianbury Crag

(Photo 01-2) Christianbury Crag.

(Photo 02-1) The Triassic sandstone cliffs and wave-cut platform of Fleswick Bay.

(Photo 02-2) Fleswick Bay.

(Photo 03-1) Roman carvings in a quarry in St Bees Sandstone in the Gelt gorge.

(Photo 03-2) Gelt Gorge.

(Photo 04-1) View southeast over Great Mell Fell.

(Photo 04-2) Great Melt Fell.

(Photo 05-1) The limestone escarpment of Holmepark Fell; the Woodbine Shale lies hidden by scree.

(Photo 05-2) Holmepark Fell.

(Photo 06-1) View southwest over Great Dummacks and Cautley Spout.

(Photo 06-2) Howgill Fells.

(Photo 07-1) View north over Kentmere Tarn.

(Photo 07-2) Kentmere.

(Photo 08-1) Stump of fossil tree in the bed of Kingwater.

(Photo 08-2) Kingwater.

(Photo 08-3) Image of thin section of fossil tree under microscope.

(Photo 09-1) The "Span of Eden" eroded in the Brockram beneath Stenkrith Bridge.

(Photo 09-2) Kirkby Stephen.

(Photo 10-1) Silica veins criss-crossing Penrith Sandstone in Lacy's Caves.

(Photo 10-2) Lacy's, Caves.

(Photo 10-3) Close-up of rounded and frosted sand grains.

(Photo 11-1) Triassic and Carboniferous sandstone building stones in Lanercost Priory.

(Photo 11-2) Lanercost Priory.

(Photo 12-1) View south towards the Lake District mountains from Pardshaw Crag.

(Photo 12-2) Pardshaw Crag.

(Photo 13-1) Plant fossils in Carboniferous mudstone.

(Photo 13-2) Parton.

(Photo 14-1) The dyke creating a natural weir south of Armathwaite.

(Photo 14-2) Armathwaite.

(Photo 15-1) Carrock Fell viewed from the southeast.

(Photo 15-2) Carrock Fell.

(Photo 16-1) View of Ennerdale from above Angler's Crag.

(Photo 16-2) Ennerdale.

(Photo 17-1) Eycott Hill lava with vesicles formed by gas bubbles.

(Photo 17-2) Eycott Hill.

(Photo 18-1) View west down High Cup Gill.

(Photo 18-2) High Cup Gill.

(Photo 19-1) View southwest over High Rigg fell.

(Photo 19-2) High Rigg.

(Photo 20-1) Explosive volcanic rocks above Langdale Valley.

(Photo 20-2) Pavey Ark.

(Photo 21-1) Erratic boulder of Shap Granite beside Wet Sleddale Reservoir.

(Photo 21-2) Close-up of Shap granite.

(Photo 22-1) View of Threlkeld Knotts and Clough Head from the north.

(Photo 22-2) Threlkeld.

(Photo 23-1) Disused slate quarry at Tilberthwaite.

(Photo 23-2) Close-up of green slate, Tilberthwaite.

(Photo 23-3) Close-up of green slate, Tilberthwaite.

(Photo 24-1) Geological fault in limestone cliffs at Arnside.

(Photo 24-2) Arnside.

(Photo 24-3) Fossil coral in limestone polished by the sea.

(Photo 25-1) View of Brothers Water and the faults that define the valley from Brock Crag.

(Photo 25-2) Brothers Water.

(Photo 26-1) The line of the thrust fault just south of the summit of Causey Pike.

(Photo 26-2) Causey Pike.

(Photo 27-1) Dufton Pike and Murton Pike viewed from Knock.

(Photo 27-2) Dufton Pike.

(Photo 28-1) View of the Pennine escarpment from south of Melmerby.

(Photo 28-2) Hartside.

(Photo 29-1) Skiddaw Granite altered to greisen in the bed of the River Caldew.

(Photo 29-2) Mosedale.

(Photo 30-1) Almost vertical beds of Carboniferous limestone in the Liddel Water.

(Photo 30-2) Penton Linns.

(Photo 31-1) Folded and faulted Silurian rocks beside the A6 just south of Shap summit.

(Photo 31-2) Shap Summit.

(Photo 32-1) Tilted and deformed Silurian limestones northeast of Tarn Hows.

(Photo 32-2) Tarn Hows.

(Photo 33-1) Slates from the Skiddaw Group of rocks on the side of Trusmadoor.

(Photo 33-2) Trusmadoor.

(Photo 34-1) Typically undulating landscape of the 'Brampton Kame Belt' east of Faugh.

(Photo 34-2) Brampton.

(Photo 35-1) Looking south over Glasson Moss from the viewing tower.

(Photo 35-2) Glasson Moss.

(Photo 36-1) View of Glenridding and the alluvial fan from Place Fell.

(Photo 36-2) Glenridding.

(Photo 37-1) Limestone pavement at Great Asby Scar.

(Photo 37-2) Great Asby Scar.

(Photo 38-1) Cave entrance at Hale Moss.

(Photo 38-2) Hale Moss.

(Photo 39-1) Looking down on Striding Edge and Red Tarn.

(Photo 39-2) Helvellyn.

(Photo 40-1) Remains of the rail bridge across the estuary west of Bowness-on-Solway.

(Photo 40-2) Inner Solway.

(Photo 41-1) Glacial moraines at Mickleden in the Langdale valley.

(Photo 41-2) Mickleden.

(Photo 42-1) Ravensglass Estuary.

(Photo 43-2) View southwest over drumlins from the A6 near Skelsmergh.

(Photo 44-1) Glacially smoothed bedrock north of Slater Bridge

(Photo 44-2) Slater Bridge.

(Photo 45-1) Wastwater and its screes from the northwest.

(Photo 45-2) Wastwater

(Photo 46-1) Old buildings and shaft at Florence Mine.

(Photo 46-2) Haematite from Florence Mine image by kind permission of the Natural History Museum, London.

(Photo 47-1) St Bees Sandstone of Furness Abbey.

(Photo 47-2) Furness Abbey.

(Photo 48-1) The Popping Stone beside the River Irthing at Gilsland.

(Photo 48-2) Gilsland Spa.

(Photo 49-1) View northeast over limestone and brickshale workings near Hallbankgate.

(Photo 49-2) Hallbankgate.

(Photo 50-1) Long Meg and her Daughters.

(Photo 50-2) Long Meg.

(Photo 51-1) Block of gypsum and anhydrite from Long Meg mine.

(Photo 51-2) Long Meg Mine.

(Photo 52-1) View west from Loughrigg Fell.

(Photo 52-2) Loughrigg.

(Photo 53-1) Lead and zinc ores (galena and sphalerite) from Nenthead mines.

(Photo 53-2) Nenthead.

(Photo 54-1) Looking down Little Dale from Littledale Edge.

(Photo 54-2) Newlands Valley.

(Photo 55-1) Roughton Gill mines at the head of the Dale Beck valley.

(Photo 55-2) Roughton Gill.

(Photo 56-1) Saltom Pit and St Bees Head.

(Photo 56-2) Saltom Pit.

(Photo 57-1) Looking down on Seathwaite from the graphite mines.

(Photo 57-2) Seathwaite.

(Photo 58-1) Sellafield from Ponsonby Church.

(Photo 58-2) Sellafield.

(Photo 59-1) Fossil 'vertebrate' prints in Penrith Sandstone. Taken with kind permission of Tullie House Museum, Carlisle.

(Photo 59-2) Langdale axe. Taken with kind permission of Tullie House Museum, Carlisle.

(Photo 59-3) Langdale axe factory.

(Photo 60-1) Granite erratic boulder at the entrance to Watchtree Nature Reserve.

(Photo 60-2) Watchtree.

Cumbria Rocks

60 extraordinary rocky places that tell
the story of the Cumbrian landscape

Ian Jackson



(Photo 00-1) Front cover. Grange Fell.



(Photo 00-2) Ian Jackson, the author.



(Photo 00-3) Fleetwith Pike.



(Photo 00-4) Fleswick Bay, St. Bees Head.



(Photo 00-5) Saltom Bay and Whitehaven.



(Photo 00-6) Looking southwest across the Vale of Eden from Hartside Pass.



(Photo 00-7) M6 at Tebay looking south. Lunedale.



(Photo 00-8) Looking south down Crummock Water

This book reveals the incredible story of the Cumbrian landscape through 60 special places and connects its rocks to wildlife, history, economy and culture.

This book will help you see Cumbria with new eyes and encourage you to explore the whole county and its diverse and beautiful places, and understand why they are as they are.

Pull on your boots and climb over remnants of old volcanoes and deep oceans, experience the power of ancient earthquakes, walk over a crag that was once a coral sea, witness the awesome force of the last Ice Age or simply wonder at the ingenuity of our ancestors who used these rocks in so many ways to create our shared heritage.

Using the latest research and scientifically accurate information, Cumbria Rocks also explains why geology is relevant to our lives today, whether that be the disposal of radioactive and toxic waste or climate change and future flood risk. It chronicles the role that rocks have played in building our heritage and culture from mining and building stones to poetry and art.

Through rich and relevant photography and straightforward, understandable, explanations it reveals how the amazing diversity of the landscape of Cumbria has come to be.

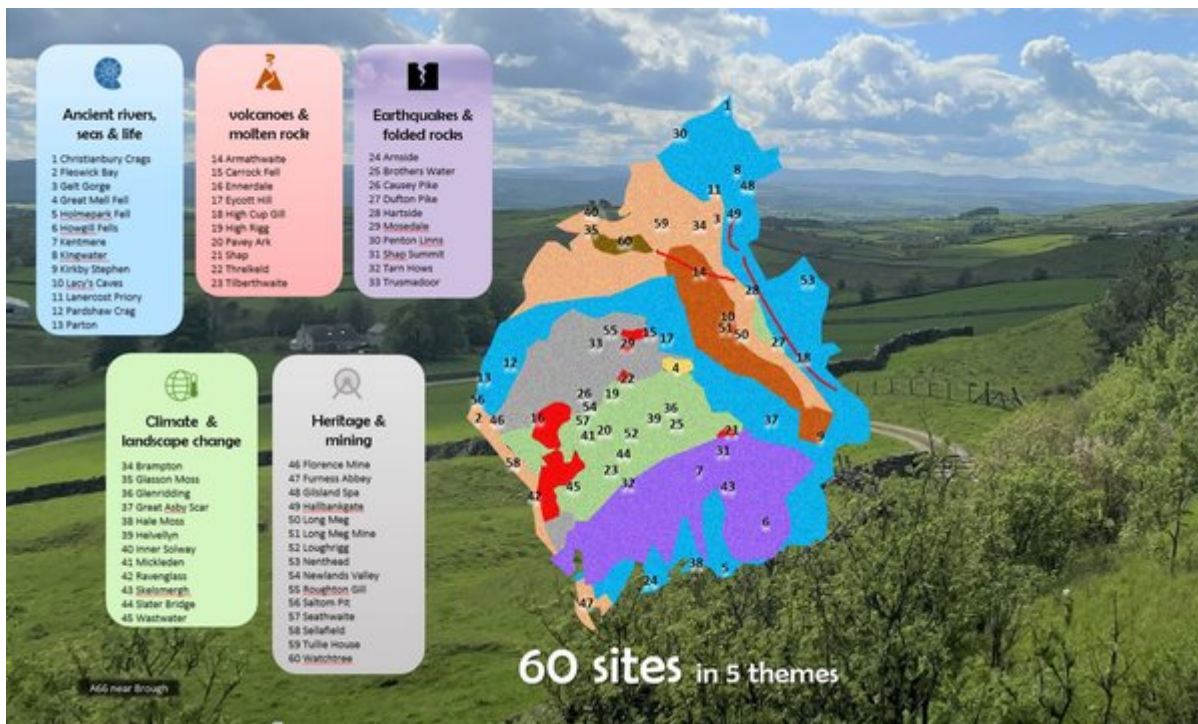
You will never look at your landscape in the same way again.



£14.00



(Photo 00-9) Rear cover.



(Photo 00_10) 60 sites in 5 themes.



(Photo 00_11) Cumbria's geological journey.



(Photo 01-1) View northwest over the eroded sandstone escarpment of Christianbury Crag



(Photo 01-2) Christianbury Crags.



(Photo 02-1) The Triassic sandstone cliffs and wave-cut platform of Fleswick Bay.



(Photo 02-2) Fleswick Bay.



(Photo 03-1) Roman carvings in a quarry in St Bees Sandstone in the Gelt gorge.



(Photo 03-2) Gelt Gorge.



(Photo 04-1) View southeast over Great Mell Fell.



(Photo 04-2) Great Melt Fell.



(Photo 05-1) The limestone escarpment of Holmepark Fell; the Woodbine Shale lies hidden by scree.



(Photo 05-2) Holmepark Fell.



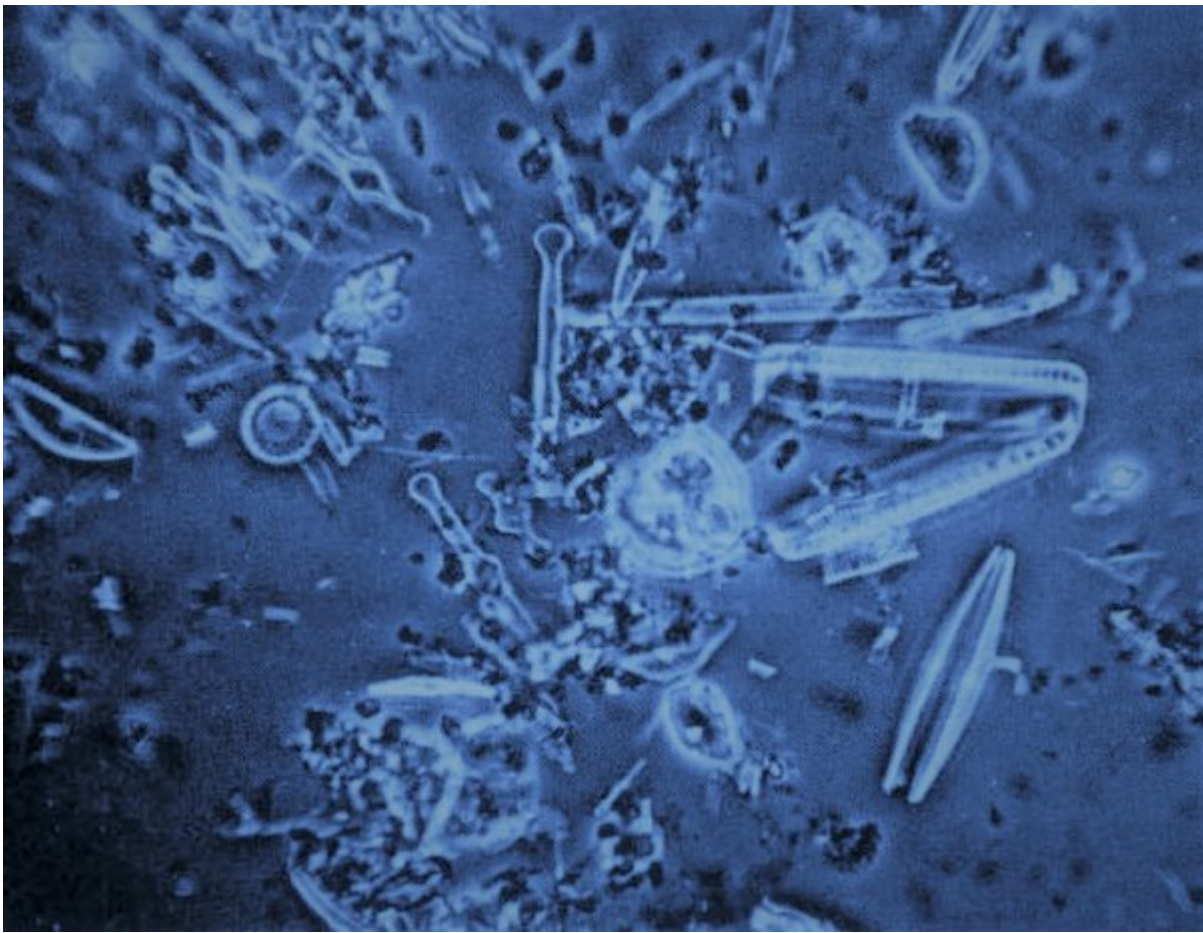
(Photo 06-1) View southwest over Great Dummacks and Cautley Spout.



(Photo 06-2) Howgill Fells.



(Photo 07-1) View north over Kentmere Tarn.



(Photo 07-2) Kentmere.



(Photo 08-1) Stump of fossil tree in the bed of Kingwater.



(Photo 08-2) Kingwater.



(Photo 08-3) Image of thin section of fossil tree under microscope.



(Photo 09-1) The "Span of Eden" eroded in the Brockram beneath Stenkrith Bridge.



(Photo 09-2) Kirkby Stephen.



(Photo 10-1) Silica veins criss-crossing Penrith Sandstone in Lacy's Caves.



(Photo 10-2) Lacy's, Caves.



(Photo 10-3) Close-up of rounded and frosted sand grains.



(Photo 11-1) Triassic and Carboniferous sandstone building stones in Lanercost Priory.



(Photo 11-2) Lanercost Priory.



(Photo 12-1) View south towards the Lake District mountains from Pardshaw Crag.



(Photo 12-2) Pardshaw Crag.



(Photo 13-1) Plant fossils in Carboniferous mudstone.



(Photo 13-2) Parton.



(Photo 14-1) The dyke creating a natural weir south of Armathwaite.



(Photo 14-2) Armathwaite.



(Photo 15-1) Carrock Fell viewed from the southeast.



(Photo 15-2) Carrock Fell.



(Photo 16-1) View of Ennerdale from above Angler's Crag.



(Photo 16-2) Ennerdale.



(Photo 17-1) Eycott Hill lava with vesicles formed by gas bubbles.



(Photo 17-2) Eycott Hill.



(Photo 18-1) View west down High Cup Gill.



(Photo 18-2) High Cup Gill.



(Photo 19-1) View southwest over High Rigg fell.



(Photo 19-2) High Rigg.



(Photo 20-1) Explosive volcanic rocks above Langdale Valley.



(Photo 20-2) Pavey Ark.



(Photo 21-1) Erratic boulder of Shap Granite beside Wet Sleddale Reservoir.



(Photo 21-2) Close-up of Shap granite.



(Photo 22-1) View of Threlkeld Knotts and Clough Head from the north.



(Photo 22-2) Threlkeld.



(Photo 23-1) Disused slate quarry at Tilberthwaite.



(Photo 23-2) Close-up of green slate, Tilberthwaite.



(Photo 23-3) Close-up of green slate, Tilberthwaite.



(Photo 24-1) Geological fault in limestone cliffs at Arnside.



(Photo 24-2) Arnside.



(Photo 24-3) Fossil coral in limestone polished by the sea.



(Photo 25-1) View of Brothers Water and the faults that define the valley from Brock Crag.



(Photo 25-2) Brothers Water.



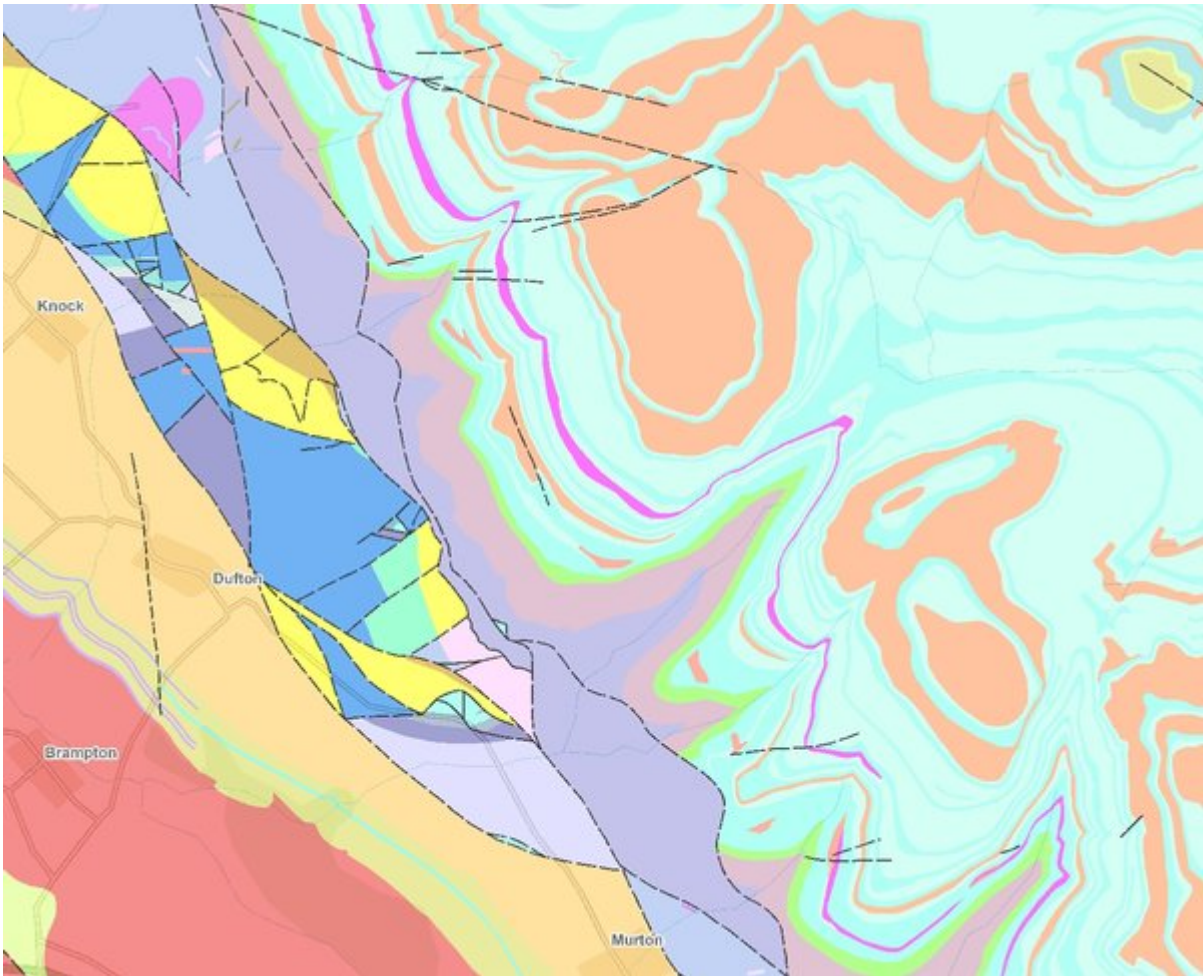
(Photo 26-1) The line of the thrust fault just south of the summit of Causey Pike.



(Photo 26-2) Causey Pike.



(Photo 27-1) Dufton Pike and Murton Pike viewed from Knock.



(Photo 27-2) Dufton Pike.



(Photo 28-1) View of the Pennine escarpment from south of Melmerby.



(Photo 28-2) Hartside.



(Photo 29-1) Skiddaw Granite altered to greisen in the bed of the River Caldew.



(Photo 29-2) Mosedale.



(Photo 30-1) Almost vertical beds of Carboniferous limestone in the Liddel Water.



(Photo 30-2) Penton Linns.



(Photo 31-1) Folded and faulted Silurian rocks beside the A6 just south of Shap summit.



(Photo 31-2) Shap Summit.



(Photo 32-1) Tilted and deformed Silurian limestones northeast of Tarn Hovs.



(Photo 32-2) Tarn Hovs.



(Photo 33-1) Slates from the Skiddaw Group of rocks on the side of Trusmadoor.



(Photo 33-2) Trusmadoor.



(Photo 34-1) Typically undulating landscape of the 'Brampton Kame Belt' east of Faugh.



(Photo 34-2) Brampton.



(Photo 35-1) Looking south over Glasson Moss from the viewing tower.



(Photo 35-2) Glasson Moss.



(Photo 36-1) View of Glenridding and the alluvial fan from Place Fell.



(Photo 36-2) Glenridding.



(Photo 37-1) Limestone pavement at Great Asby Scar.



(Photo 37-2) Great Asby Scar.



(Photo 38-1) Cave entrance at Hale Moss.



(Photo 38-2) Hale Moss.



(Photo 39-1) Looking down on Striding Edge and Red Tarn.



(Photo 39-2) Helvellyn.



(Photo 40-1) Remains of the rail bridge across the estuary west of Bowness-on-Solway.



(Photo 40-2) Inner Solway.



(Photo 41-1) Glacial moraines at Mickleden in the Langdale valley.



(Photo 41-2) Mickleden.



(Photo 42-1) Ravensglass Estuary.



(Photo 43-2) View southwest over drumlins from the A6 near Skelsmergh.



(Photo 44-1) Glacially smoothed bedrock north of Slater Bridge



(Photo 44-2) Slater Bridge.



(Photo 45-1) Wastwater and its screes from the northwest.



(Photo 45-2) Wastwater



(Photo 46-1) Old buildings and shaft at Florence Mine.



(Photo 46-2) Haematite from Florence Mine image by kind permission of the Natural History Museum, London.



(Photo 47-1) St Bees Sandstone of Furness Abbey.



(Photo 47-2) Furness Abbey.



(Photo 48-1) The Popping Stone beside the River Irthing at Gilsland.



(Photo 48-2) Gilsland Spa.



(Photo 49-1) View northeast over limestone and brickshale workings near Hallbankgate.



(Photo 49-2) Hallbankgate.



(Photo 50-1) Long Meg and her Daughters.



(Photo 50-2) Long Meg.



(Photo 51-1) Block of gypsum and anhydrite from Long Meg mine.



(Photo 51-2) Long Meg Mine.



(Photo 52-1) View west from Loughrigg Fell.



(Photo 52-2) Loughrigg.



(Photo 53-1) Lead and zinc ores (galena and sphalerite) from Nenthead mines.



(Photo 53-2) Nenthead.



(Photo 54-1) Looking down Little Dale from Littledale Edge.



(Photo 54-2) Newlands Valley.



(Photo 55-1) Roughton Gill mines at the head of the Dale Beck valley.



(Photo 55-2) Roughton Gill.



(Photo 56-1) Saltom Pit and St Bees Head.



(Photo 56-2) Saltom Pit.



(Photo 57-1) Looking down on Seathwaite from the graphite mines.



(Photo 57-2) Seathwaite.



(Photo 58-1) Sellafield from Ponsonby Church.



(Photo 58-2) Sellafield.



(Photo 59-1) Fossil 'vertebrate' prints in Penrith Sandstone. Taken with kind permission of Tullie House Museum, Carlisle.



(Photo 59-2) Langdale axe. Taken with kind permission of Tullie House Museum, Carlisle.



(Photo 59-3) Langdale axe factory.



(Photo 60-1) Granite erratic boulder at the entrance to Watchtree Nature Reserve.



(Photo 60-2) Watchtree.