
A walkers' guide to the geology and landscape of western Mendip

Andy Farrant with contributions from Elaine Burt, Sharon Pilkington, Ian Thomas and Mark Woods

Bibliographical reference: Farrant, A R. 2008. A walkers' guide to the geology and landscape of western Mendip. Book and map at 1:25 000 scale. (Keyworth, Nottingham: British Geological Survey.) ISBN 978 085272576 4

© NERC 2008 All rights reserved Keyworth, Nottingham: British Geological Survey

(Front cover)

(Rear cover)

(Figure 1) Lion.

Contents

[Title page and preliminaries](#)

Useful information

Acknowledgements

[Introduction](#)

[Rocks of Mendip](#)

[The Ice Age](#)

[Geology and man](#)

[Cheddar Gorge](#)

[The Charterhouse area](#)

[Blackdown](#)

[Burrington Combe](#)

[Shipham and Rowberrow](#)

[South flank: Crook Peak and Axbridge](#)

[North flank: Banwell to Churchill](#)

[The Priddy area](#)

[South flank: Draycott and Westbury](#)

[Wookey Hole and Ebbor Gorge](#)

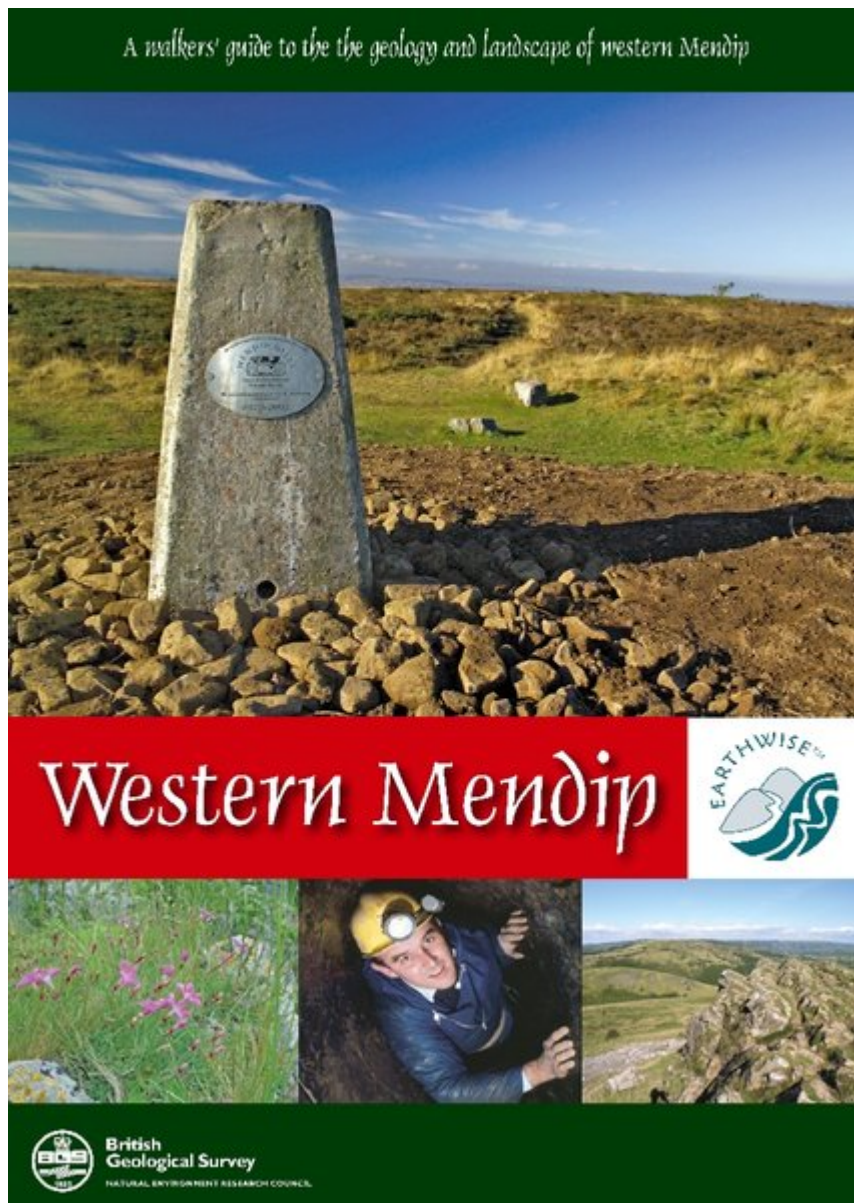
[Wells](#)

[North flank: Harptree and Smitham Hill](#)

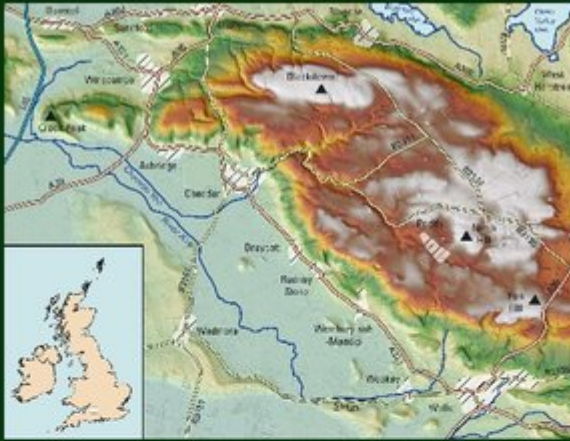
[Geological glossary](#)

[Further reading](#)

[Figures](#)



(Front cover).

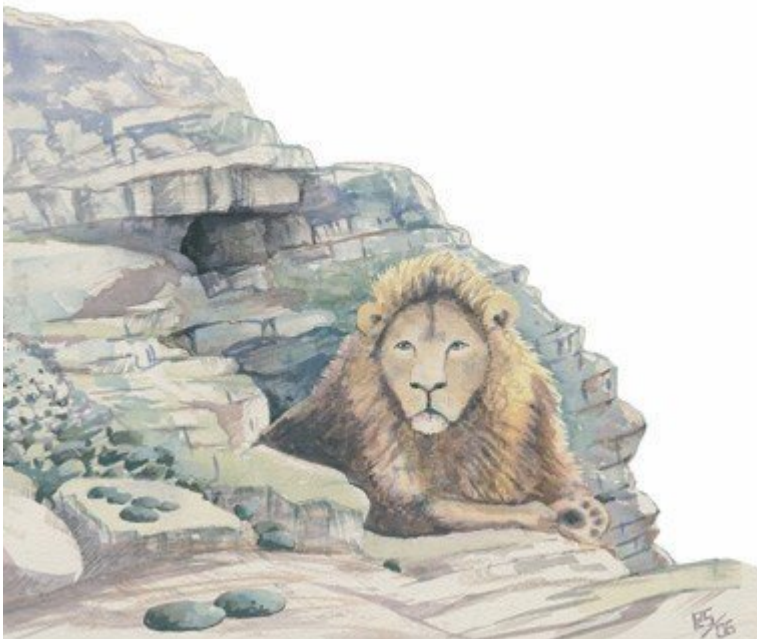


The Mendip area is well known for its gorges, caves and cheese. It is a special landscape, rich in wildlife, heritage and natural resources, and owes much to its underlying geology. The Mendip Hills have long been visited by geologists and tourists, who come to admire the spectacular rocky gorges, limestone uplands, gushing springs and subterranean streams. For those who wish to learn about the area, this guide gives details of the geology and natural history, and will help you to understand how the landscape is formed. There is something here for everyone, from the keen local walker to the tourist, the ambler and the scrambler. We hope you enjoy exploring the Mendip landscape.



© NERC 2008

(Rear cover).



(Figure 1) Lion.