
The geology of Ardnamurchan, north-west Mull and Coll. Memoir for geological sheet 51, part 52 (Scotland)

By J. E. Richey and H. H. Thomas

British Geological Survey

(Title page) The geology of Ardnamurchan, North-west Mull and Coll.

(Front cover) The geology of Ardnamurchan, North-west Mull and Coll.

(Plate 1) Frontispiece. A. View of Ben Hiant, Ardnamurchan, from west. Main mass of this rocky hill is Ben Hiant Intrusion (see (Figure 19), p. 160). Maclean's Nose to right is agglomerate. Junction of these rocks extends from shore up well-marked hollow, seen on photograph above Mingary Castle (see also Plate 1, B). Stallachan Dubha is formed of outlying portion of Ben Hiant Intrusion. Scarp-features in middle distance are due to cone-sheets. Mingary Castle stands on a craignurite sill. Promontory beyond is Rudha a' Mhìle ((Figure 25), p. 177). Geological Survey Photograph, No. [C2829](#). B. Marginal Scarp of Ben Want Intrusion, seen from south-east. The view is taken from west of Stallachan Dubha (see Plate 1, A and Explanation). The Ben Hiant Intrusion is closely jointed. Vent-agglomerate forming foreground contains two large masses of big-felspar basalt (p. 126), one in centre of view, the other to the left. Geological Survey Photograph, No. [C2850](#) .

Contents

[Title page and preliminaries](#)

Contents

Preface

List of illustrations

[Chapter 1. Introduction](#)

[Chapter 2 Lewisian Complex of Coll](#)

[Chapter 3 Moine Schists of Ardnamurchan](#)

[Chapter 4 Trias and Jurassic, Ardnamurchan and North-west Mull](#)

[Chapter 5 Review of Tertiary igneous activity in Britain](#)

[Chapter 6 Tertiary igneous rocks, Ardnamurchan, History of Research](#)

[Chapter 7 Tertiary igneous rocks, Ardnamurchan and North-west Mull, Time Sequence](#)

[Chapter 8 Tertiary igneous rocks, Ardnamurchan, General Petrology](#)

[Chapter 9 Tertiary basal sediments, Ardnamurchan](#)

[Chapter 10 Tertiary basalt Lavas, North-west Mull and Ardnamurchan](#)

[Chapter 11 Tertiary volcanic vents, Centres 1 and 2, Ardnamurchan](#)

[Chapter 12 Tertiary major intrusions, Centre 1, Ardnamurchan](#)

[Chapter 13 Tertiary major intrusions, Centre 1, Ardnamurchan](#)

[Chapter 14 Tertiary cone-sheets, Centres 1, 2, and 3, Ardnamurchan](#)

[Chapter 15 Tertiary ring-dykes of Ardnamurchan, Introduction](#)

[Chapter 16 Tertiary ring-dykes of Centre 2, Ardnamurchan](#)

[Chapter 17 Tertiary ring-dykes of Centre 2, Ardnamurchan \(continued\)](#)

[Chapter 18 Tertiary ring-dykes of Centre 2, Ardnamurchan](#)

[Chapter 19 Tertiary ring-dykes of Centre 3, Ardnamurchan](#)

[Chapter 20 Tertiary ring-dykes of Centre 3, Ardnamurchan](#)

[Chapter 21 Tertiary ring-dykes of Centre 3, Ardnamurchan](#)

[Chapter 22 Tertiary dykes, Ardnamurchan and North-west Mull](#)

[Chapter 23 Dykes of Coll](#)

[Chapter 24 Tertiary basic plugs and sheets of North-west Mull](#)

[Chapter 25 Close of Tertiary Igneous Period to Recent](#)

[Chapter 24 Economics](#)

[Appendix 1 Itineraries](#)

[Appendix 2 List of Geological Survey photographs, Ardnamurchan](#)

[Appendix 3 Bibliography](#)

[Figures and plates](#)

[Systematic Series rock specimen images](#)

[BGS maps of Ardnamurchan](#)

BRITISH GEOLOGICAL SURVEY

The geology of Ardnamurchan, north-west Mull and Coll

Memoir for geological sheet 51, part 52 (Scotland)

J. E. Richey, MC, BA, and H. H. Thomas, MA, ScD, FRS

with contributions by

E. B. Bailey, MC, MA, FRS, J. B. Simpson, BSc, V. A. Eyles, BSc,
and G. W. Lee, DSc

and chemical analyses by

E. G. Radley, FCS, and B. E. Dixon, MSc, AIC

EDINBURGH HIS MAJESTY'S STATIONERY OFFICE 1930

1987 reprint

(Title page) *The geology of Ardnamurchan, North-west Mull and Coll.*

*Deinn na
h'Urchrach.*

Ben Hiant.

*Stallachan
Dubha.*

*Maclean's
Nose.*

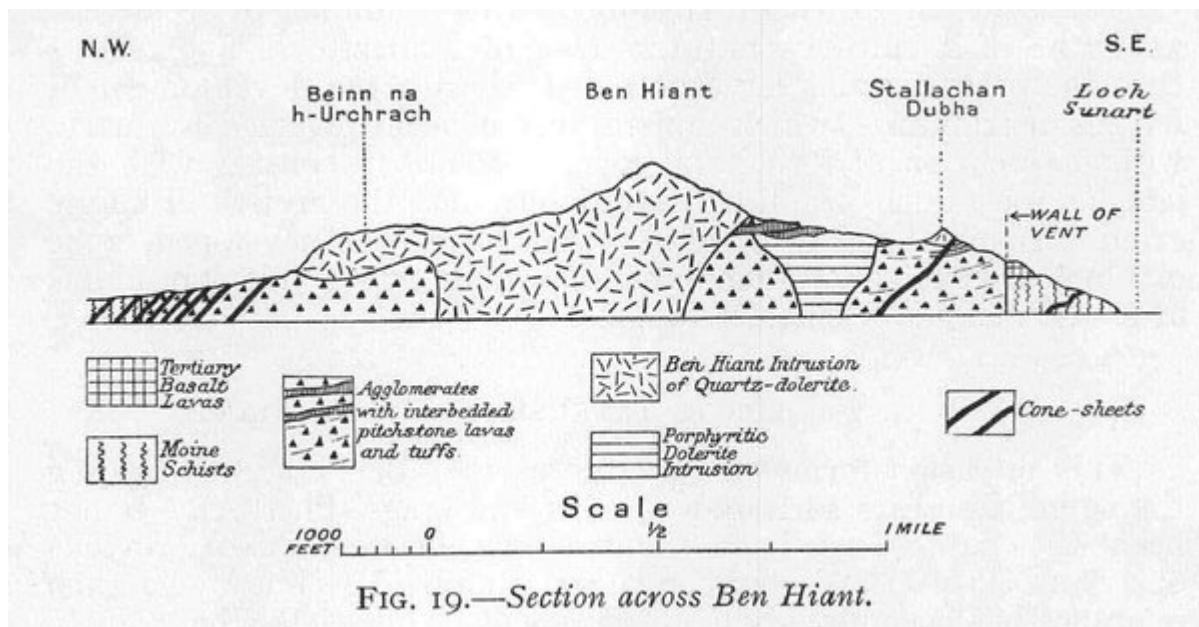


A.—View of Ben Hiant, Ardnamurchan, from west
(For Explanation, see p. viii.)

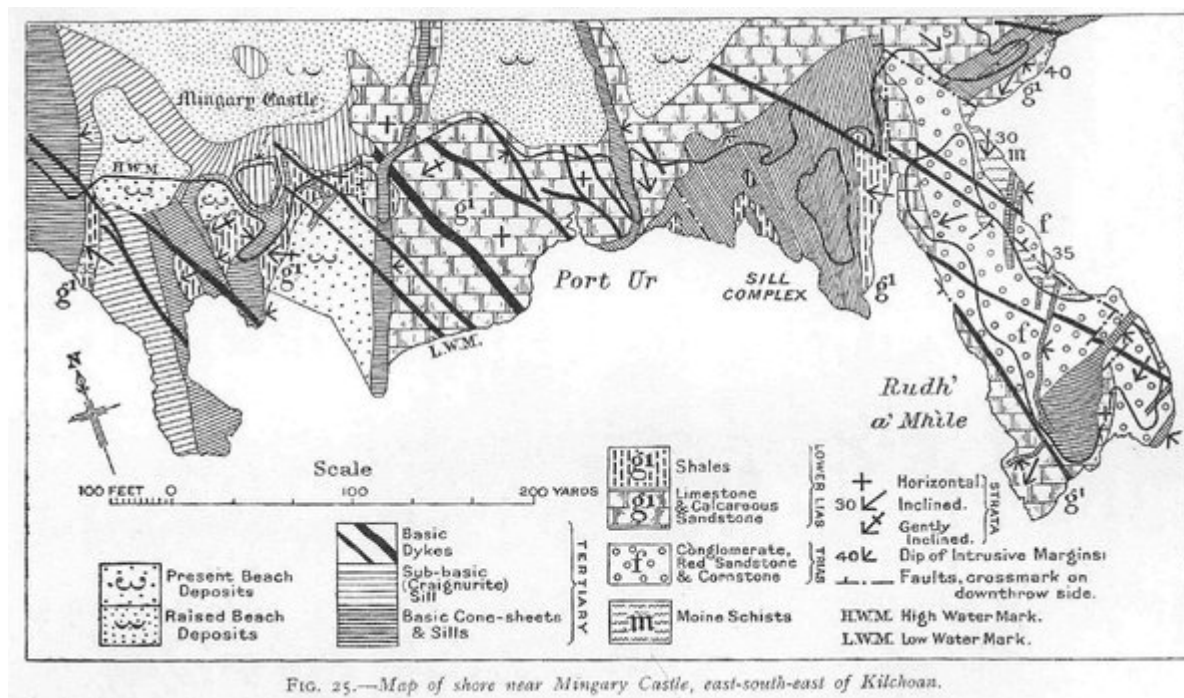


B.—Marginal Scarp of Ben Hiant Intrusion, seen from south-east
(For Explanation, see p. viii.)

(Plate 1) A. View of Ben Hiant, Ardnamurchan, from west. Main mass of this rocky hill is Ben Hiant Intrusion (see (Figure 19), p. 160). Maclean's Nose to right is agglomerate. Junction of these rocks extends from shore up well-marked hollow, seen on photograph above Mingary Castle (see also Plate 1, B). Stallachan Dubha is formed of outlying portion of Ben Hiant Intrusion. Scarp-features in middle distance are due to cone-sheets. Mingary Castle stands on a craignurite sill. Promontory beyond is Rudha a' Mhile ((Figure 25), p. 177). Geological Survey Photograph, No. [C2829](#). B. Marginal Scarp of Ben Want Intrusion, seen from south-east. The view is taken from west of Stallachan Dubha (see Plate 1, A and Explanation). The Ben Hiant Intrusion is closely jointed. Vent-agglomerate forming foreground contains two large masses of big-felspar basalt (p. 126), one in centre of view, the other to the left. Geological Survey Photograph, No. [C2850](#).



(Figure 19) Section across Ben Hiant.



(Figure 25) Map of shore near Mingary Castle, east-south-east of Kilchoan.

BRITISH GEOLOGICAL SURVEY

The GEOLOGY of
ARDNAMURCHAN,
NORTH-WEST MULL
and COLL

HIS MAJESTY'S STATIONERY OFFICE

1930

1987 reprint

(Front cover) The geology of Ardnamurchan, North-west Mull and Coll.